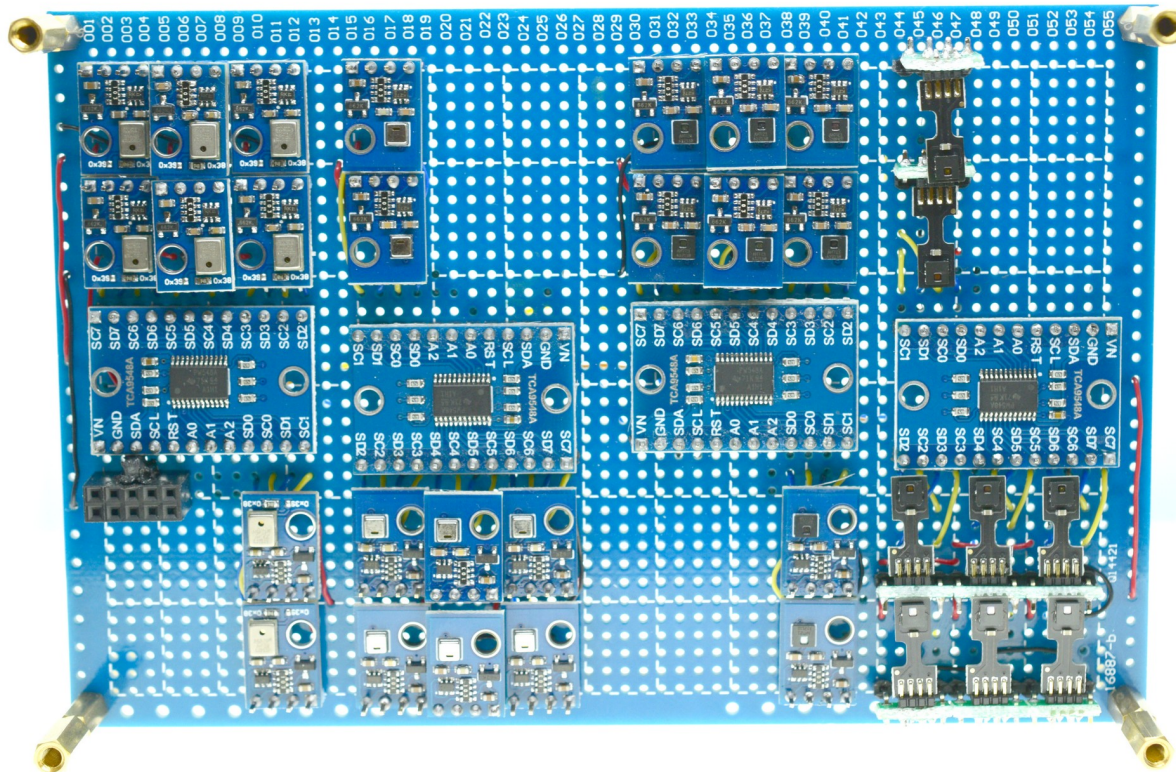


v10-AHT Sensors Board

Stable board dedicated to new Aosong sensors only.



- 8 new AHT10
- 8 new AHT20
- 8 new AHT21
- 8 new AHT25
- All soldered. Much shorter i2c wires on the board,
- Single sensor on each multiplexer i2c lane
- Same voltage on all sensors. 5v only w/o additional i2c 3.3v conversion.
- all sensors on more or less same height (to avoid height related thermal gradient impact)