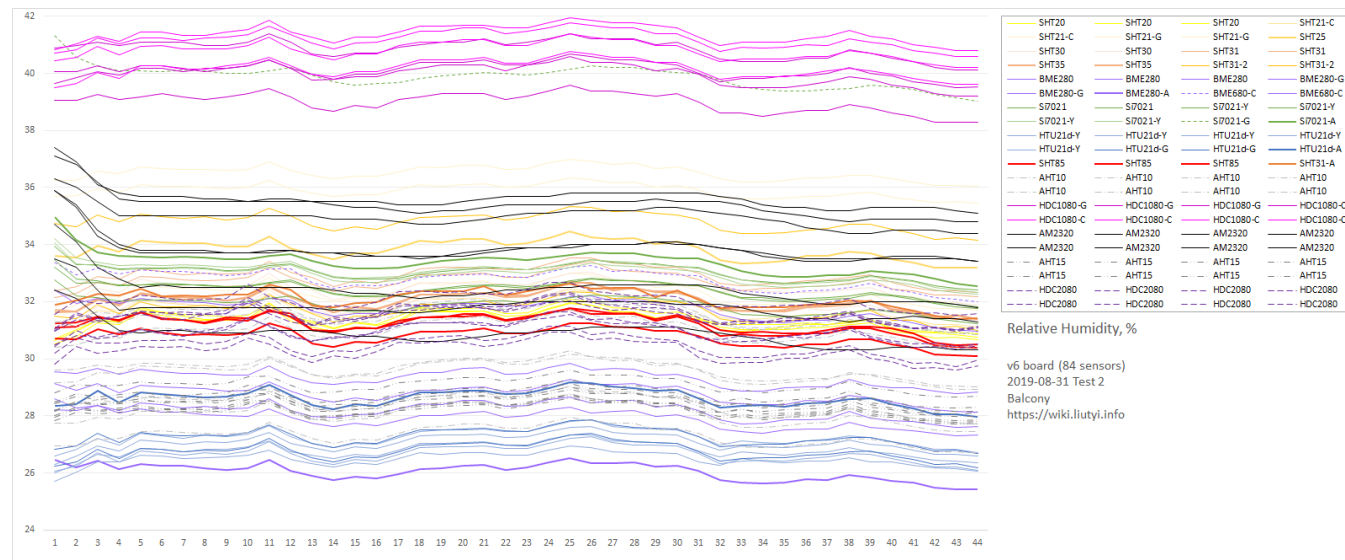


Test 2 v6 balcony RH30

v6 board (still unstable) balcony low humidity

Humidity

v6t2_h.CSV

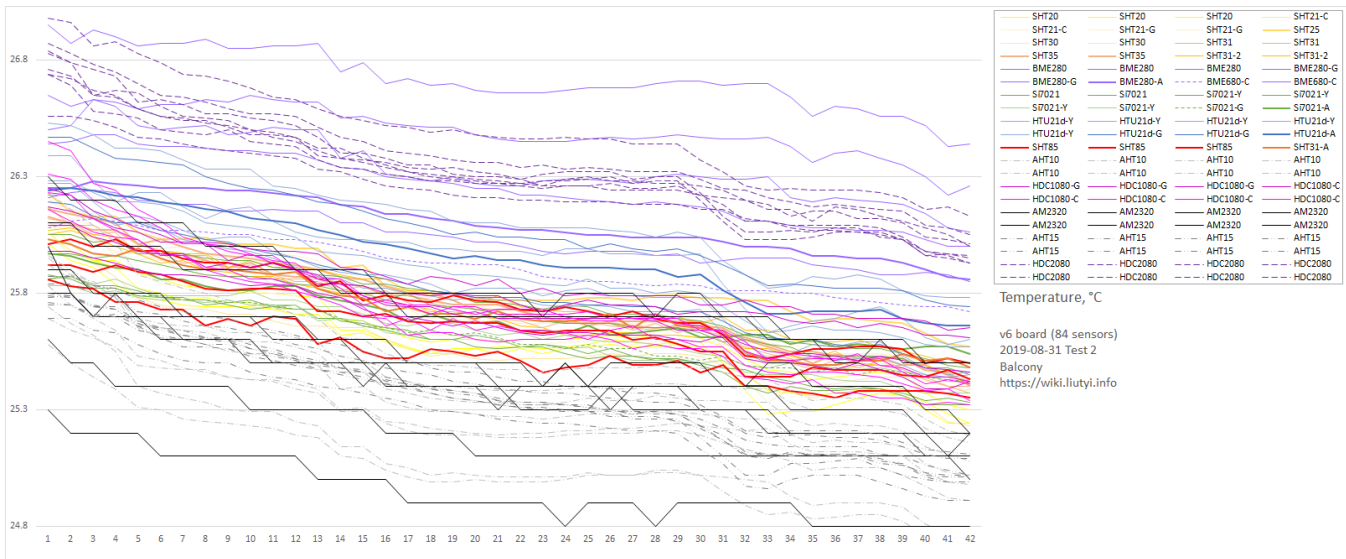


SHT2x	rh, %	SHT3x	rh, %	BMEx80	rh, %	SI7021	rh, %	HTU21	rh, %	SHT85	rh, %	AHT10	rh, %	AHT15	rh, %	HDC1080	rh, %
SHT20	30.77	SHT30	31.87	BME280	68.1	SI7021	31.82	HTU21d-Y	26.07			AHT10	29.01	AHT15	27.99	HDC1080-G	40.12
SHT20	30.66	SHT30	31.35	BME280	27.33	SI7021	31.23	HTU21d-Y	26.36			AHT10	26.72	AHT15	28.69	HDC1080-G	38.3
SHT20	30.86	SHT31	32.16	BME280	28.84	SI7021-Y	32.41	HTU21d-Y	26.59	SHT85	30.08	AHT10	30.41	AHT15	27.74	HDC1080-G	39.21
SHT21-C	31.12	SHT31	32.33	BME280-G	27.64	SI7021-Y	31.76	HTU21d-Y	26.71	SHT85	30.52	AHT10	30.85	AHT15	28.09	HDC1080-C	39.53
SHT21-C	31.7	SHT35	31.4	BME280-G	28.12	SI7021-Y	32.25	HTU21d-Y	26.09	SHT85	30.39	AHT10	27.44	AHT15	28.17	HDC1080-C	40.8
SHT21-G	35.44	SHT35	31.38	BME280-A	25.42	SI7021-Y	32.32	HTU21d-G	26.17	SHT31-A	31.43	AHT10	30.92	AHT15	27.79	HDC1080-C	39.61
SHT21-G	36.03	SHT31-2	30.99	BME680-C	32	SI7021-G	39.03	HTU21d-G	26.67			AHT10	27.72	AHT15	28.3	HDC1080-C	40.6
SHT25	33.18	SHT31-2	34.15	BME680-C	30.96	SI7021-A	32.55	HTU21d-A	27.96			AHT10	28.94	AHT15	27.85	HDC1080-C	40.2
Average	32.47		31.95		28.62		32.92		26.58		30.33		29.00		28.08		39.80

-A Adafruit modules, SHT85 - Senserion Modules, -C - CJMCU modules, -G, Y - GY-xx, (other are some Chinese Noname modules)

Temperature

v6t2_t.CSV



SHT2x	t° C	SHT3x	t° C	BMEx80	t° C	SI7021	t° C	HTU21	t° C	SHT85	t° C	AHT10	t° C	AHT15	t° C	HDC1080	t° C	HDC2
SHT20	25.23	SHT30	25.34	BME280	23.14	SI7021	25.3	HTU21d	25.57			AHT10	24.67	AHT15	25.01	HDC1080-G	25.44	HDC208
SHT20	25.24	SHT30	25.38	BME280	26.21	SI7021	25.32	HTU21d	25.45			AHT10	24.89	AHT15	24.98	HDC1080-G	25.64	HDC208
SHT20	25.28	SHT31	25.37	BME280	26.42	SI7021-2	25.47	HTU21d	25.42	SHT85	25.52	AHT10	25.17	AHT15	24.98	HDC1080-G	25.59	HDC208
SHT21-C	25.22	SHT31	25.35	BME280-2	26.05	SI7021-2	25.45	HTU21d	25.77	SHT85	25.38	AHT10	24.73	AHT15	24.9	HDC1080-C	25.37	HDC208
SHT21-C	25.37	SHT35	25.42	BME280-2	25.98	SI7021-2	25.36	HTU21d	25.56	SHT85	25.34	AHT10	25	AHT15	25.07	HDC1080-C	25.28	HDC208
SHT21-G	25.4	SHT35	25.39	BME280-A	25.84	SI7021-2	25.42	HTU21d-2	25.74	SHT31-A	25.47	AHT10	25.07	AHT15	25.09	HDC1080-C	25.4	HDC208
SHT21-G	25.36	SHT31-2	25.41	BME680	25.7	SI7021-3	25.4	HTU21d-2	25.48			AHT10	25.15	AHT15	25	HDC1080-C	25.39	HDC208
SHT25	25.54	SHT31-2	25.49	BME680	25.86	SI7021-A	25.51	HTU21d-A	25.65			AHT10	24.96	AHT15	24.96	HDC1080-C	25.34	HDC208
Average	25.33		25.39		26.01		25.40		25.58		25.41		24.96		25.00		25.43	