

AirVisual node outdoor installation



Assume you like <https://www.airvisual.com/earth> or <https://www.airvisual.com/air-quality-map> but your city/country is not yet on the map. Or you already have Node but missing outdoor air quality measurements. There is a way to fix it. You can install and register your AirVisual node outdoor. Yes, it needs yet another node to be bought. Article on AirVisual site about sharing your data : <http://support.airvisual.com/knowledgebase/articles/948895-how-can-i-make-my-outdoor-node-pro-s-data-public>

And below is example of

DIY case for outdoor installation of AirVisual Node

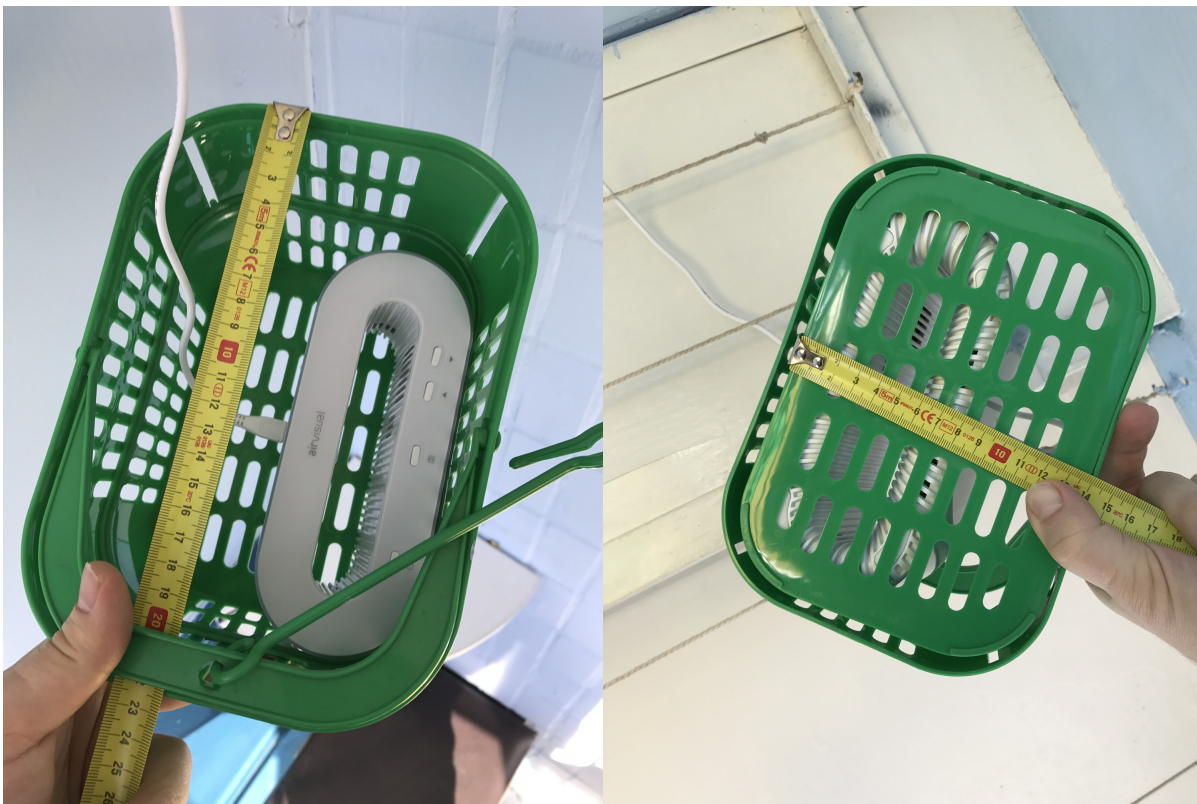
AirVisual node itself is absolutely indoor device. It needs good weather proof case that is also have good airflow.

Wrong way

It just a test. Not a case really. Not an outdoor. 😊



So, let's measure and buy something that might be used as an outdoor case.



Creating an outdoor case

Do It Yourself outdoor case for AirVisual Node using plastic air vent grilles and plastic flower pots.



Some cuts and glue





Those outdoor installation was successfully registered and used for 1.5 years.

Some minor improvements after 1.5 years

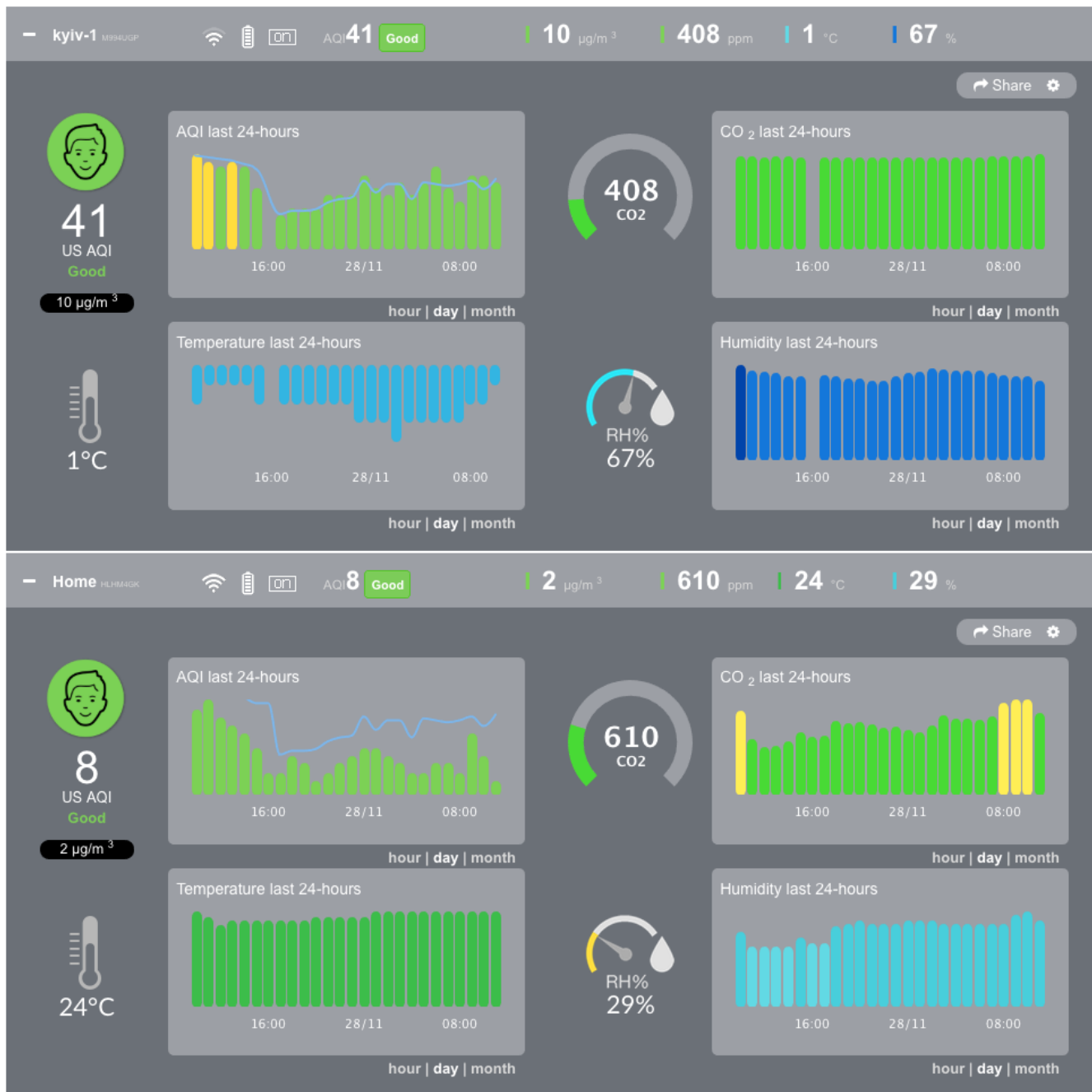
Strong magnet mount, new wire and USB socket on the case. Old USB extension cable was still working, but looks oxidized. So to ensure operation for some couple of more years..



Yes, buying two AirVisual nodes is expensive. And Yes, creating that kind of case, mounting, setup/register as outdoor takes a lot of hours. 😊

Outdoor and Indoor node data

What do you see



What community see from your node

 **Perova**

Kyiv, Ukraine



42 US AQI

PM2.5 | 10.2 $\mu\text{g}/\text{m}^3$



-4°



Wind 14.4 km/h

Humidity 73%

13.5k followers



12:00, Nov 28

MORE