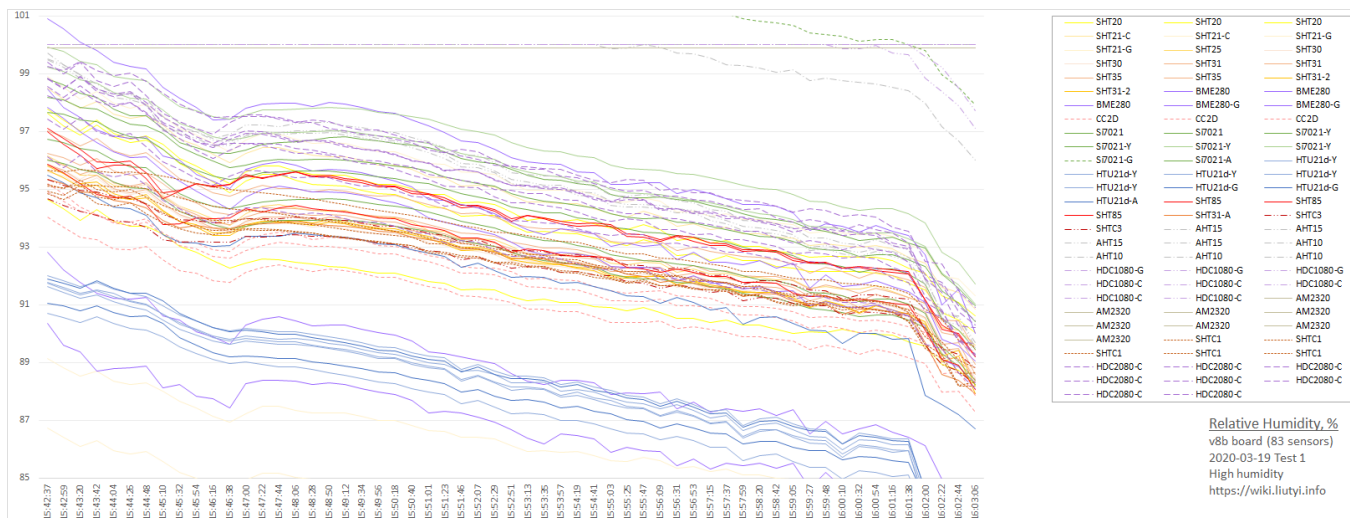


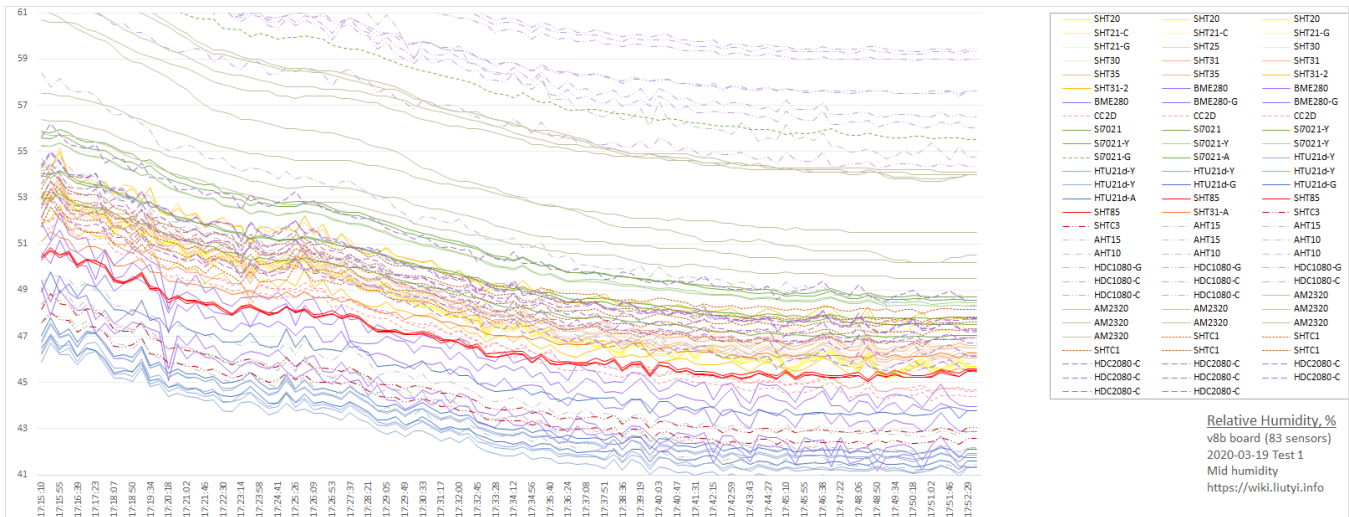


[illegible]

Part 2. Mid Humidity

Humidity diff to SHT85 average (for the last data log row)

[illegible]

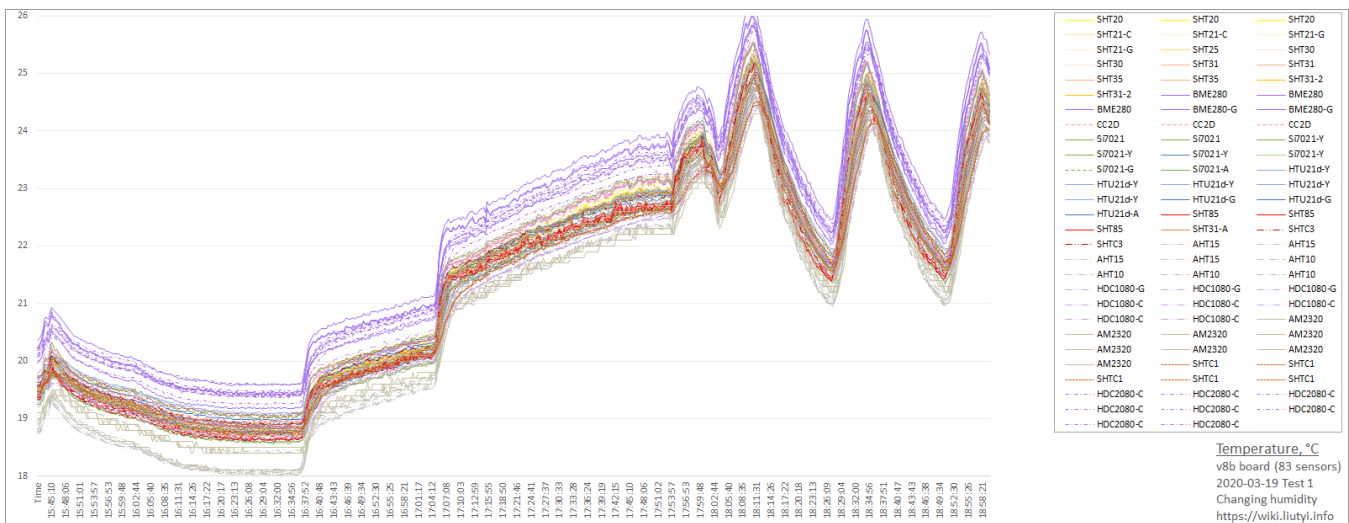


Temperature

Overview

Temperature diff to SHT85 average (for the last data log row)

SHT2X	SHT3X	SHT8X	SHTC1	SHTC3	BME280	Si7021	HTU21d	HDC1080	HDC2080	AM2320	AHT10	AHT15	CC2D33
0.43	0.35	0.06	0.04	0.19	0.87	0.02	0.32	0.22	0.81	0.27	-0.04	-0.34	0.49
0.42	0.40	-0.02	-0.07	0.10	0.96	0.02	0.11	0.43	0.93	-0.23	0.01	-0.27	0.47
0.48	0.34	-0.03	0.33		1.20	0.31	0.03	0.47	0.93	0.07	0.09	-0.30	0.40
0.38	0.31		-0.13		0.82	0.22	0.36	-0.08	0.93	0.07	-0.13	-0.28	
0.50	0.32		0.02		0.48	0.11	0.14	-0.20	1.00	-0.33			
0.48	0.35					0.19	0.03	-0.19	0.90	-0.13			
0.38	0.10					0.28	0.32	-0.11	0.93	-0.23			
0.55	0.34					0.47	0.30	-0.20	0.74	0.17			
	0.31												



Part 1. High Humidity

Temperature diff to SHT85 average (for the last data log row)

